



LA BOULANGÈRE A DES ÉCUS

La boulangère a des écus
qui ne lui coûtent guère

CHOEURS : La boulangère a des écus
qui ne lui coûtent guère

Elle en a je les ai vus
J'ai vu la boulangère aux écus

CHOEURS : J'ai vu la boulangère
J'ai vu la boulangère aux écus

CHOEURS : J'ai vu la boulangère

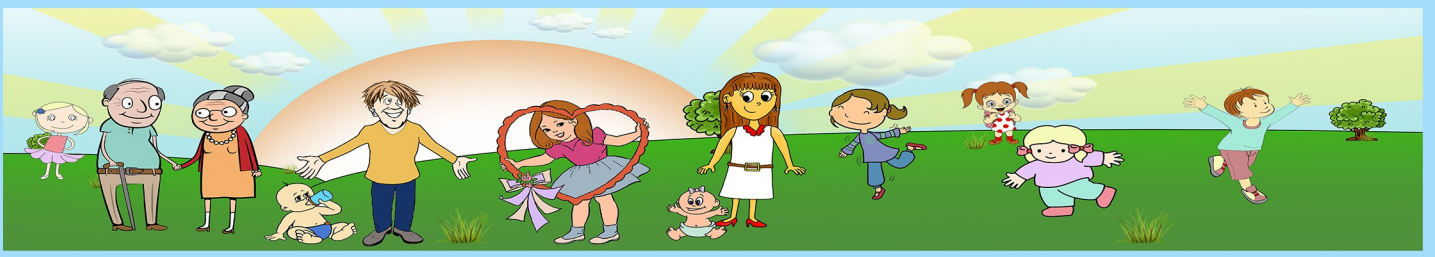
D'où viennent tous ces beaux écus
Charmante boulangère

CHOEURS : D'où viennent tous ces beaux écus
Charmante boulangère

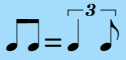
Ils me viennent d'un bon Crésus
Dont je fais bien l'affaire vois-tu

CHOEURS : Dont je fais bien l'affaire
Dont je fais bien l'affaire vois-tu

CHOEURS : Dont je fais bien l'affaire



LA BOULANGÈRE A DES ÉCUS



Musical notation for the first line of the piece. It starts with a treble clef, a key signature of three flats (B-flat major), and a 3/4 time signature. The first measure is a whole rest. The second measure is a whole rest with a 4/4 time signature change. The third measure is a whole rest. The fourth measure contains a triplet of eighth notes. The piece ends with a 3/4 time signature.

Musical notation for the second line. It starts with a treble clef, a key signature of three flats, and a 3/4 time signature. The first measure is a triplet of eighth notes. The second measure is a quarter note. The third measure is a quarter note. The fourth measure is a quarter note. The fifth measure is a quarter note. The sixth measure is a quarter note. The seventh measure is a quarter note. The eighth measure is a quarter note. The piece ends with a 3/4 time signature.

Musical notation for the third line. It starts with a treble clef, a key signature of three flats, and a 3/4 time signature. The first measure is a quarter note. The second measure is a quarter note. The third measure is a quarter note. The fourth measure is a quarter note. The fifth measure is a quarter note. The sixth measure is a quarter note. The seventh measure is a quarter note. The eighth measure is a quarter note. The piece ends with a 4/4 time signature.

Musical notation for the fourth line. It starts with a treble clef, a key signature of three flats, and a 4/4 time signature. The first measure is a quarter note. The second measure is a quarter note. The third measure is a quarter note. The fourth measure is a quarter note. The fifth measure is a quarter note. The sixth measure is a quarter note. The seventh measure is a quarter note. The eighth measure is a quarter note. The piece ends with a 4/4 time signature.

Musical notation for the fifth line. It starts with a treble clef, a key signature of three flats, and a 4/4 time signature. The first measure is a quarter note. The second measure is a quarter note. The third measure is a quarter note. The fourth measure is a quarter note. The fifth measure is a quarter note. The sixth measure is a quarter note. The seventh measure is a quarter note. The eighth measure is a quarter note. The piece ends with a 4/4 time signature.

Musical notation for the sixth line. It starts with a treble clef, a key signature of three flats, and a 4/4 time signature. The first measure is a quarter note. The second measure is a quarter note. The third measure is a quarter note. The fourth measure is a quarter note. The fifth measure is a quarter note. The sixth measure is a quarter note. The seventh measure is a quarter note. The eighth measure is a quarter note. The piece ends with a 4/4 time signature.

Musical notation for the seventh line. It starts with a treble clef, a key signature of three flats, and a 4/4 time signature. The first measure is a quarter note. The second measure is a quarter note. The third measure is a quarter note. The fourth measure is a quarter note. The fifth measure is a quarter note. The sixth measure is a quarter note. The seventh measure is a quarter note. The eighth measure is a quarter note. The piece ends with a 4/4 time signature.

Tablature

