



DEAR ELISA

With what can we go fetch water

CHOIRS : *Dear Elisa, dear Elisa*

With what can we go fetch water

CHOIRS : *With a bucket my dear Eugene*

Dear Eugene with a bucket

But the bucket has got a whole

CHOIRS : *Dear Elisa, dear Elisa*

But the bucket has got a whole

CHOIRS : *You must plug it my dear Eugene*

Dear Eugene you must plug it

But with what must we plug it

CHOIRS : *Dear Elisa, dear Elisa*

But with what must we plug it

CHOIRS : *But with some straw my dear Eugene*

Dear Eugene you use some straw

But the straw is not yet cut

CHOIRS : Dear Elisa, dear Elisa

But the straw is not yet cut

CHOIRS : You must cut it my dear Eugene

Dear Eugene you must cut it

Tell me with what should we cut it

CHOIRS : Dear Elisa, dear Elisa

Tell me with what should we cut it

CHOIRS : But with a scythe my dear Eugene

Dear Eugene we use a scythe

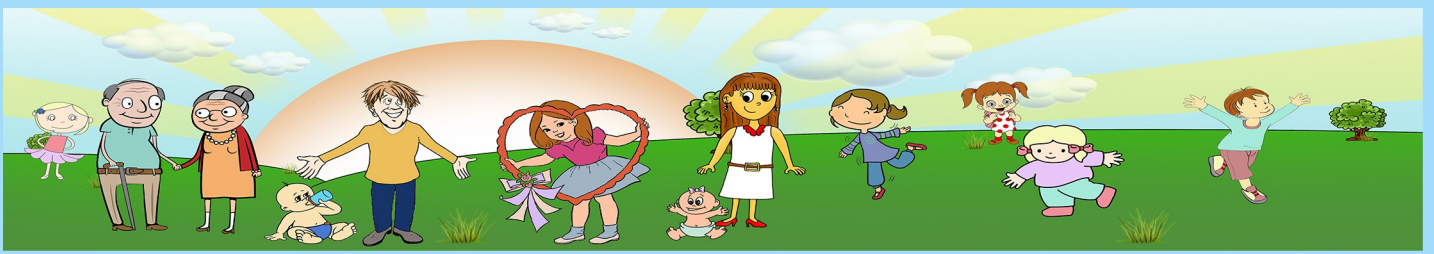
But the scythe is not yet sharpened

CHOIRS : Dear Elisa, dear Elisa

But the scythe is not yet sharpened

CHOIRS : So sharpen it my dear Eugene

Dear Eugene so sharpen it



DEAR ELISA

B \flat Eb F B \flat
 3 B \flat (add9) F B \flat
 5 B \flat (add9) F B \flat
 7 Cm B \flat F/A
 9 Gm F/A Cm B \flat
 11 F \sharp F \sharp /A \sharp B(add9)
 13 F \sharp B B(add9)
 15 F \sharp B C \sharp m
 17 B F \sharp /A \sharp G \sharp m F \sharp /A \sharp

Musical score for "Dear Elisa" in 6/4 time, featuring various chords and melodic lines. The score includes first and second endings and a key signature change to F# major.

3

19 $C\#m$ B G G^7/B

21 $C(add9)$ G C

23 $C(add9)$ G C

25 Dm C G/B

27 C G^7 C

tablature

