

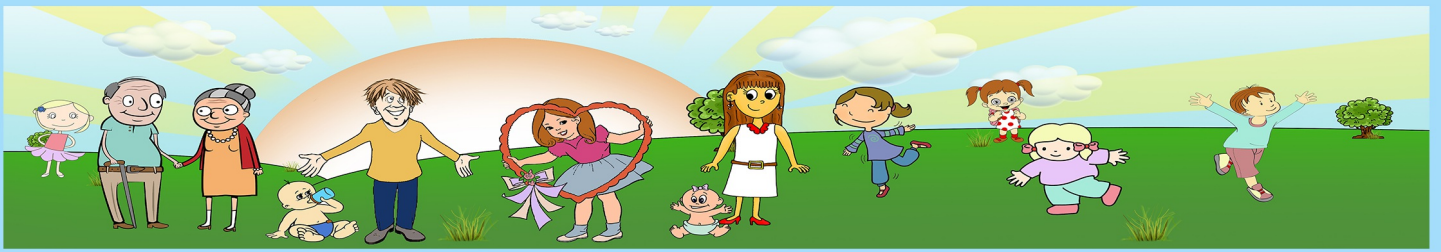


NIGHT NIGHT, SLEEPY TIGHT

Night night, sleepy tight
Baby will be sleeping quickly
Night night, sleepy tight
Baby will be sleeping soon

CHOIRS : **Night night, sleepy tight**
Baby will be sleeping quickly
Night night, sleepy tight
Baby will be sleeping soon

Baby will be sleeping soon



NIGHT NIGHT, SLEEPY TIGHT

C C Dm G C
 8 Am Dm G C A(sus4) A
 16 D Em A D Bm
 23 Em A *rall.* D G/D *rall.* A D

Tablature

C Dm G Am A(sus4) A D Em Bm G/D