

## *COMPÈRE GUILLERI* *(Barnaby)*

Il était un p'tit homme  
Qui s'appelait Guilleri  
Carabi  
Il s'en fut à la chasse  
A la chasse aux perdrix  
Carabi

**CHOIRS :** Hoho hicketo, hihi hickety  
The little barnaby  
You better watch out, You better watch out  
Or you'll end up dead meat

Il monta sur un arbre  
Pour voir ses chiens couri'  
Carabi  
La branche vient à rompre  
Et Guilleri tombit  
Carabi

**CHOIRS :** Hoho hicketo, hihi hickety  
The little barnaby  
You better watch out, You better watch out  
Or you'll end up dead meat

Il se cassa la jambe  
Et le bras se démit  
Carabi  
Les dames de l'hôpital  
Sont arrivées au bruit  
Carabi

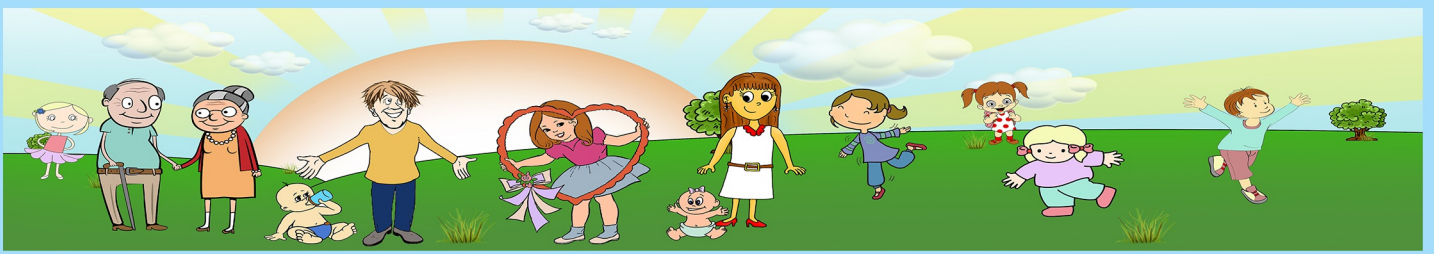
CHOIRS : Hoho hicketo, hihi hickety  
The little barnaby  
You better watch out, You better watch out  
Or you'll end up dead meat

L'une apporte un emplâtre  
L'autre de la charpie  
Carabi  
On lui banda la jambe  
Et le bras lui remit  
Carabi

CHOIRS : Hoho hicketo, hihi hickety  
The little barnaby  
You better watch out, You better watch out  
Or you'll end up dead meat

Pour remercier ces dames  
Guilleri les embrassit  
Carabi  
Ça prouve que par les femmes  
L'homme est toujours guéri  
Carabi

CHOIRS : Hoho hicketo, hihi hickety  
The little barnaby  
You better watch out, You better watch out  
Or you'll end up dead meat



# COMPÈRE GUILLERI (Barnaby)

D G/D D A D G/D

4 D G/D D G

6 D G/D

8 D G A

10 G D Em A

12 D G/D 1. D A 2. D Bb7

15 Eb Ab/Eb Eb Ab/Eb

17 Eb Ab

19 Eb Ab/Eb Eb Ab Bb

Musical score for 'Compère Guilleri (Barnaby)'. The score is written in treble clef with a key signature of two sharps (F# and C#). It consists of nine staves of music. The first staff starts with a 4/4 time signature and contains a repeat sign. The second staff continues the melody. The third staff shows a change to 2/4 time. The fourth staff continues in 2/4. The fifth staff shows a change to 4/4 time. The sixth staff continues in 4/4. The seventh staff shows a change to 2/4 time and includes first and second endings. The eighth staff continues in 2/4. The ninth staff continues in 2/4. The score includes various chords such as D, G/D, A, G, Em, Bb7, Eb, and Ab/Eb.

21 Ab Eb

23 Fm Bb Eb Ab/Eb B7

26 E A/E E A/E

28 E A

30 E A/E E A B

32 A E

34 F#m B7 E A/E E A/E E

*Tablature*

D xx0	G/D xx0	A x0	G 00	Em 000	Bb7 x0	Eb x6fr	Ab/Eb x4fr
Ab x4fr	Bb x6fr	Fm 00	B7 x0	E 000	A/E 0x0	B x0	F#m 00