

DANS LA FORÊT LOINTAINE *(In The Forest)*

Dans la forêt lointaine
On entend le coucou
Du haut de son grand chêne
Il répond au hibou

CHOIRS : **Cuckoo, cuckoo**

On entend le coucou

CHOIRS : **Cuckoo, cuckoo**

On entend le coucou

CHOIRS : **In the heart of the forest
We hear the cuckoo bird
He climbs up to the highest
Branch and calls other birds**

Cuckoo, cuckoo

On entend le coucou

CHOIRS : **Cuckoo, cuckoo**

On entend le coucou

Dans la forêt lointaine
On entend le coucou
Du haut de son grand chêne
Il répond au hibou

CHOIRS : **Cuckoo, cuckoo**

On entend le coucou

CHOIRS : **Cuckoo, cuckoo**

On entend le coucou

CHOIRS : Cuckoo, cuckoo
On entend le coucou

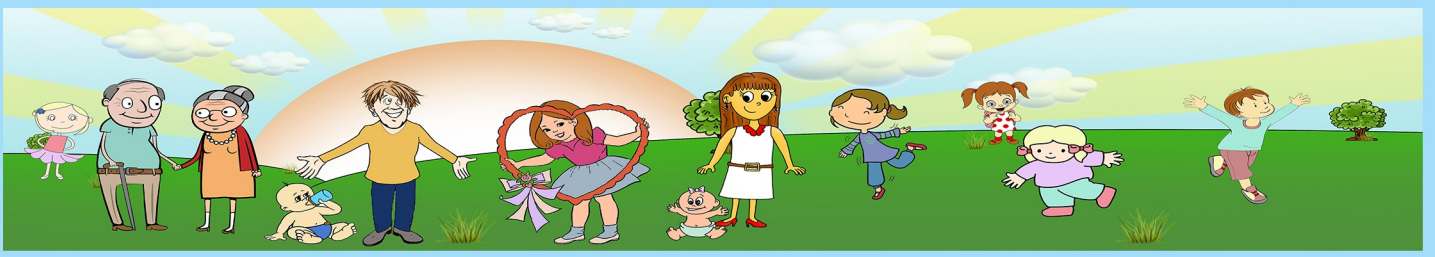
CHOIRS : Cuckoo, cuckoo
On entend le coucou

CHOIRS : In the heart of the forest
We hear the cuckoo bird
He climbs up to the highest
Branch and calls other birds

Coucou, coucou
On entend le coucou
Coucou, coucou
On entend le coucou

CHOIRS : Cuckoo, cuckoo
We hear the cuckoo bird
Cuckoo, cuckoo
We hear the cuckoo bird

Coucou, coucou
On entend le coucou
Coucou, coucou
On entend le coucou



DANS LA FORÊT LOINTAINE

(In The Forest)

Musical score for guitar in 4/4 time, featuring chords and melodic lines across 28 measures.

Measures 1-4: F, C⁷, F, F, C⁷, F

Measures 5-8: F, Dm⁷, C⁷, F, Dm⁷, C⁷, F

Measures 9-12: F, Dm⁷, C⁷, F, C⁷, C[#] (Measures 11-12 are in 2/4 time)

Measures 13-16: F[#], C^{#7}, F[#], D^{#m7}, C^{#7}, F[#]

Measures 17-20: F[#], D^{#m7}, C^{#7}, F[#], D^{#m7}, C^{#7}, F[#] (Measures 19-20 are in 2/4 time)

Measures 21-24: C^{#7}, D⁷, G, D⁷, G, Em⁷

Measures 25-27: D⁷, G, G, D⁷, G

Measures 28-30: Em⁷, D⁷, G, D⁷, G (Measures 29-30 are in 2/4 time)

Tablature

Guitar chord diagrams for the following chords:

- F
- C⁷
- Dm⁷
- C[#]
- F[#]
- C^{#7}
- D^{#m7}
- D⁷
- G
- G
- Em⁷