

FAIS DODO, COLAS *(Sleepy Tight)*

Fais dodo, Colas mon p'tit frère
Fais dodo, t'auras du lolo

Maman est en haut
Qui fait du gâteau
Papa est en bas
Qui fait l'chocolat

CHOIRS : *Sleepy tight, Booboo little brother*
Sleepy tight, I'll give you a rub

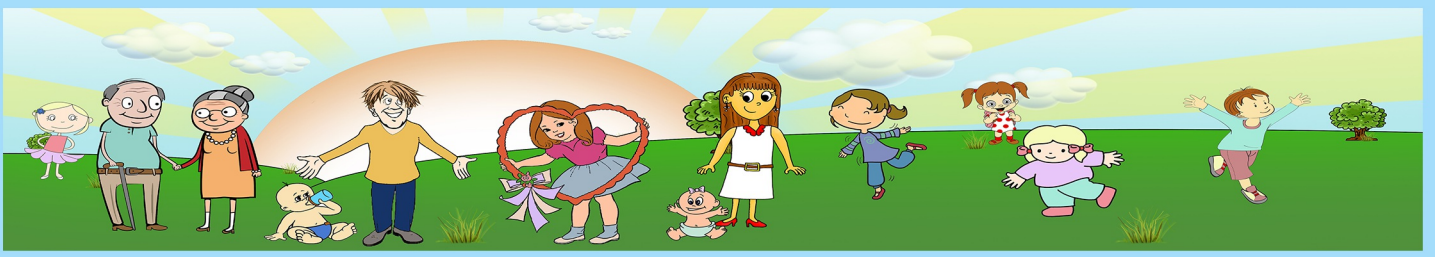
Ta sœur est en haut
Qui fait des chapeaux
Ton frère est en bas
Qui fait du nougat

CHOIRS : *Sleepy tight, Booboo little brother*
Sleepy tight, I'll give you a rub

on cousin Gaston
Fait des gros bonbons
Ta cousine Charlotte
Fait de la compote

CHOIRS : *Sleepy tight, Booboo little brother*
Sleepy tight, I'll give you a rub

Fais dodo, Colas mon p'tit frère
Fais dodo, t'auras du lolo



FAIS DODO, COLAS (Sleepy Tight)

Musical score for guitar in G major, 6/8 time signature. The score consists of 8 staves of music with various chords and melodic lines. The key signature has one sharp (F#), and the time signature is 6/8. The score includes a key signature change to Bb major at measure 14 and back to G major at measure 25. The piece ends with a double bar line and repeat signs.

Measures 1-5: Chords D, A, D, D, A, D.

Measures 6-9: Chords D, A, D, D, A, D.

Measures 10-13: Chords D, A, D/A, A/C#, Bm7, A, G.

Measures 14-17: Chords A, Bb, Eb, Bb, Eb.

Measures 18-21: Chords Eb, Bb, Eb, Eb, Bb.

Measures 22-24: Chords Cm7, Bb/D, Cm7, Bb, Ab, Bb.

Measures 25-28: Chords Eb, Bb, Eb, Eb, Bb, Eb.

Measures 29-32: Chords Bb, Eb.

Tablature

Chord diagrams for guitar:

- D: x00232
- A: x02020
- D/A: x02020
- A/C#: x02020
- Bm7: x24432
- G: 000232
- Bb: x24432
- Eb: x24432
- Cm7: x33333
- Bb/D: x33333