

LA BONNE AVENTURE (A Silly Story)

Je suis un petit poupon
De bonne figure
Qui aime bien les bonbons
Et les confitures
Si vous voulez m'en donner
Je saurai bien les manger

CHOIRS :

**What a silly story yeah
What a silly story
What a silly story yeah
What a silly story**

Lorsque les petits enfants
Sont gentils et sages
On leur donne des bonbons
De belles images
Mais quand ils se font gronder
C'est le fouet qu'il faut donner

CHOIRS :

**What a sad story yeah
What a sad story
What a sad story yeah
What a sad story**

Je serai sage et bien bon
Pour plaire à ma mère
Je saurai bien mes leçons
Pour plaire à mon père
Je veux bien les contenter
Et s'ils veulent m'embrasser

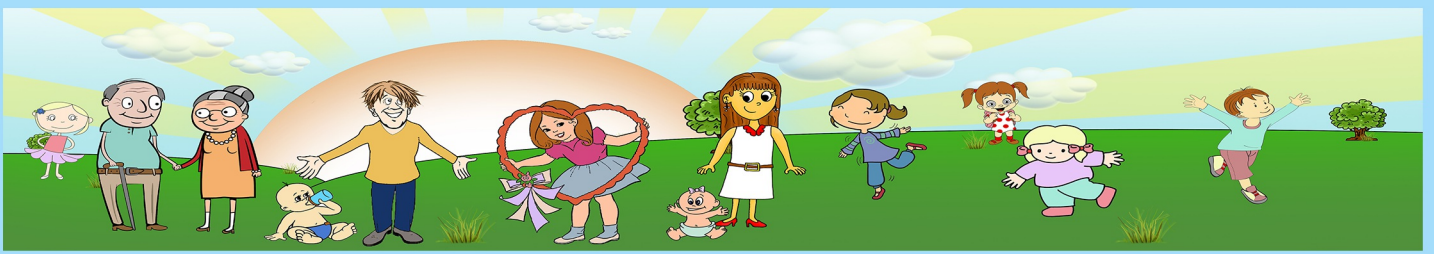
CHOIRS :

What a silly story yeah
What a silly story
What a silly story yeah
What a silly story

Je suis un petit poupon
De bonne figure
Qui aime bien les bonbons
Et les confitures
Si vous voulez m'en donner
Je saurai bien les manger

CHOIRS :

What a silly story yeah
What a silly story
What a silly story yeah
What a silly story



LA BONNE AVENTURE (A Silly Story)

G C G Em D G C G

4 G D G C G D G

7 C Am D G C G

10 G D G C G Em D

13 G D Em D G Eb

16 Ab Db Ab Eb Ab Db Ab

19 Ab Eb Ab Db Bbm Eb

22 Ab Db Ab Eb Ab Db Ab

Musical score for 'LA BONNE AVENTURE (A Silly Story)'. The score is written in treble clef with a key signature of one sharp (F#) and a 4/4 time signature. It consists of eight staves of music. The first staff begins with a repeat sign. The second staff starts with a measure rest labeled '4'. The third staff starts with a measure rest labeled '7'. The fourth staff starts with a measure rest labeled '10' and includes a first ending bracket over measures 10-11. The fifth staff starts with a measure rest labeled '13' and includes a second ending bracket over measures 13-14. The sixth staff starts with a measure rest labeled '16'. The seventh staff starts with a measure rest labeled '19'. The eighth staff starts with a measure rest labeled '22'. The score concludes with a double bar line.

25 Fm Eb Ab E A D A

28 A E A D A E A

31 D Bm E A D A

34 A E A D A F#m E A

37 D A E A E A

Tablature

